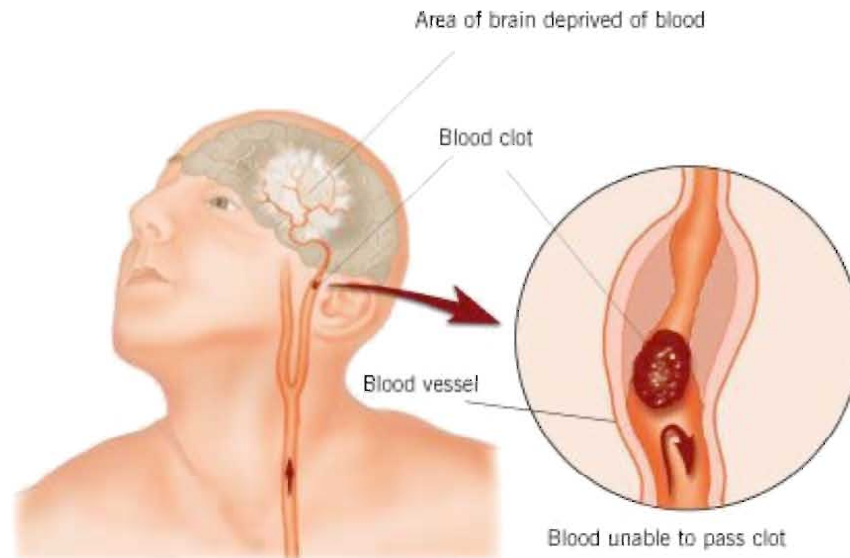


Recognizing a **STROKE** -

Remember the **1st Three Letters...**



S - Ask the individual to **SMILE**

T - Ask the person to **TALK** & Speak a simple sentence (coherently)

R - Ask the person to **RAISE BOTH ARMS**

and now a new sign...

T- Ask the person to **'STICK OUT' THEIR TONGUE**

(If the tongue is 'crooked' - this is also an indicator)

If the person has trouble with ANY ONE of these tasks, call 911 immediately & describe The symptoms to the dispatcher...